

SAFETY AND SCHOOL ENVIRONMENT

Non-CSAP Course Offerings

Your School Offers	does	does not
• art.....	<input checked="" type="checkbox"/>	<input type="checkbox"/>
• drama or theater.....	<input checked="" type="checkbox"/>	<input type="checkbox"/>
• music.....	<input checked="" type="checkbox"/>	<input type="checkbox"/>
• physical education.....	<input checked="" type="checkbox"/>	<input type="checkbox"/>
• opportunity for civic or community engagement.....	<input checked="" type="checkbox"/>	<input type="checkbox"/>
• internet safety program.....	<input checked="" type="checkbox"/>	<input type="checkbox"/>
• International Baccalaureate.....	<input type="checkbox"/>	<input checked="" type="checkbox"/>
• extracurricular activities.....	<input checked="" type="checkbox"/>	<input type="checkbox"/>
• athletics.....	<input checked="" type="checkbox"/>	<input type="checkbox"/>
• career and technical education.....	<input checked="" type="checkbox"/>	<input type="checkbox"/>
• advanced placement.....	<input checked="" type="checkbox"/>	<input type="checkbox"/>
• honors.....	<input type="checkbox"/>	<input checked="" type="checkbox"/>

Safety and Discipline

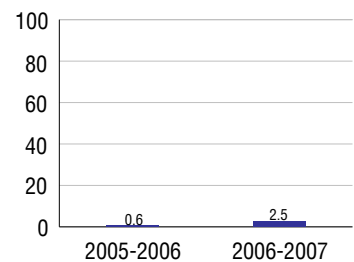
Safe schools are a top priority for parents, teachers, and communities. Your school safety and discipline record for the 2007-2008 school year is:

Type of Incident	Number of Incidents Reported	Percent of Total Incidents
Substance Abuse - Drugs	3	23.1%
Substance Abuse - Alcohol		
Substance Abuse - Tobacco		
Felony Assaults		
Fights	4	30.8%
Possession of Dangerous Weapons		
Other Violations Code of Conduct	6	46.2%

Student Attendance and School Calendar

2007-2008	Your School
Enrollment	111
Average Daily Attendance	103
Student Dropouts	2.5%

Dropout Rate



Student Information Over Time

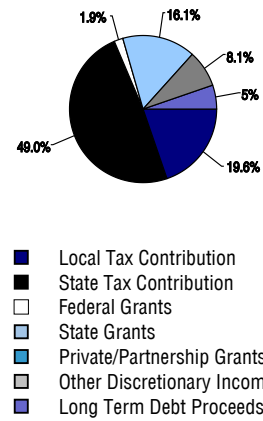
	2005-2006	2006-2007	2007-2008
Student Enrollment Stability	96.3%	100.0%	100.0%
Students Eligible for Free and Reduced Lunch	16.3 %	13.8 %	18.0 %

DISTRICT TAXPAYER'S REPORT

Sources of School District Revenue 2007

Local Tax Contribution	\$943,779
State Tax Contribution	2,356,920
Federal Grants	91,198
State Grants	774,523
Private/Partnership Grants	0
Other Discretionary Income	389,358
Total District Operating Revenue	\$4,555,778
Long Term Debt Proceeds	253,416
Total District Revenue	\$4,809,194
Total District Operating Revenue Per Pupil =	\$12,797
Total District Revenue Per Pupil (Including Long Term Debt) =	\$13,509
District Per Pupil Operating Revenue =	\$7,713
State Average Per Pupil Operating Revenue =	\$6,080

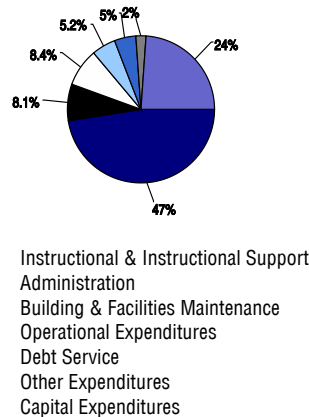
District Source of Funds 2007



District Use of Funds 2007

Instructional & Instructional Support	\$2,244,792
Administration	383,605
Building & Facilities Maintenance	396,099
Operational Expenditures	245,112
Debt Service	220,258
Other Expenditures	114,753
Total District Operating Expenditures	\$3,604,619
Capital Expenditures	1,127,490
Total District Use of Funds	\$4,732,109

District Use of Funds 2007



District Debt and Capital Construction & Equipment

Total Outstanding Bonded Debt	\$1,375,000
Average Annual Percentage Interest Rate on Debt	3.75%
Amount Raised from Most Recent Bond	\$2,300,000
Amount Spent on New Buildings During Last 2 Years	\$79,871

Accreditation

Accreditation is Colorado's primary accountability system, incorporating achievement levels, academic growth, achievement gaps, post-secondary readiness, improvement planning, and compliance. The state accredits districts and districts accredit individual schools.

District Accreditation Status for the 2007-2008 school year:

Voter Approved Funding Changes

Your community did /did not hold an election in November 2006

The following items have been approved by voters:

TABOR Override

Bond

Mill Levy Increase

KIOWA HIGH SCHOOL



KIOWA C-2

www.kiowaschool.org

School Accountability Report 2007-2008 School Year

School Performance Summary

Overall Academic Performance on State Assessments	High
--	-------------

Academic Growth of Students	High
------------------------------------	-------------

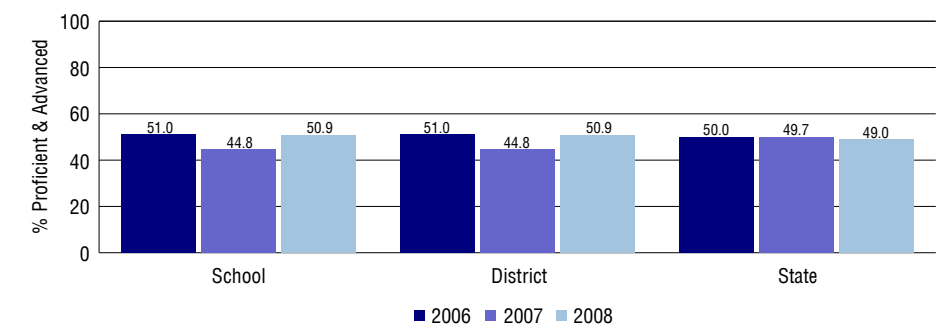
Overall Academic Performance on State Assessments

Each school in the State received a rating of "Excellent", "High", "Average", "Low", or "Unsatisfactory" for student academic performance based on 2007-2008 CSAP and COACT results. The rating is calculated using weighted percentages of each CSAP proficiency level for all content area and grade results for the school, as well as average COACT Reading, Writing, and Math Grade 11 results.

Academic Growth of Students

Each school in the State received a rating of "Low", "Typical", or "High" for student academic growth based on CSAP results. The calculation method is new for 2007-2008. The rating is calculated using student percentile scores matched over two years. More information about the Overall Academic Performance rating and Academic Growth of Students calculations can be found here: http://www.cde.state.co.us/cdeassess/SAR_Info.html

Percent Proficient and Advanced for High Grades for All Content Areas



Student Test Scores Used For Calculating Overall Academic Performance

92.5%	Test Scores Counted
0.0%	Test Scores not used due to Language
7.5%	Test Scores not used due to New Student

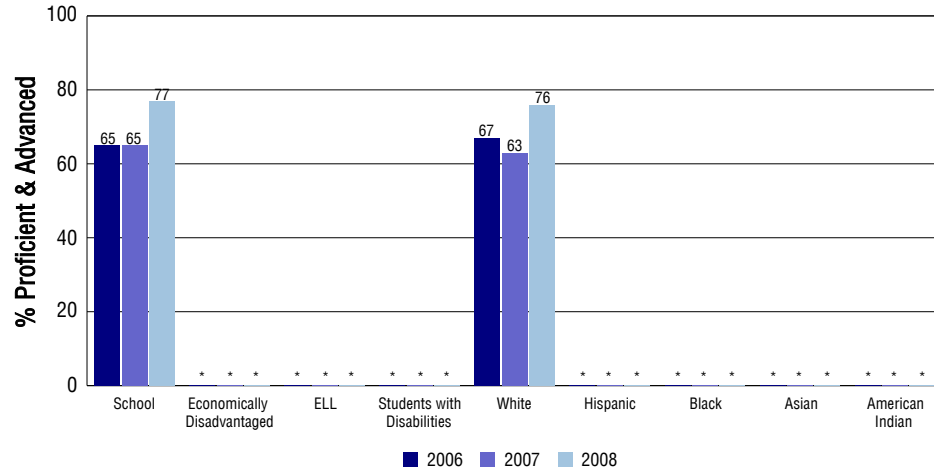
For more information and further details about this report, visit www.state.co.us/schools
Colorado Department of Education, 201 East Colfax Ave. Denver, CO 80203

Kiowa High School
0930/4728/H
525 Comanche Street . Kiowa, CO 80117 . 303-621-2115
10/20/2008

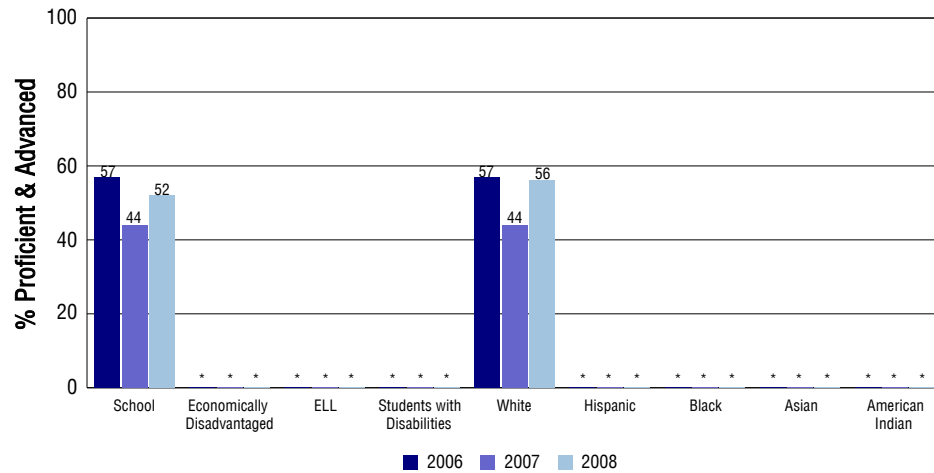
STUDENT PERFORMANCE

These graphs show the percent Proficient and Advanced trends over the past three years for Reading, Writing, and Math. Results are presented for the entire school for all reported grades as well as for different subgroups. Note: * indicates any group with less than 16 student results to be reported.

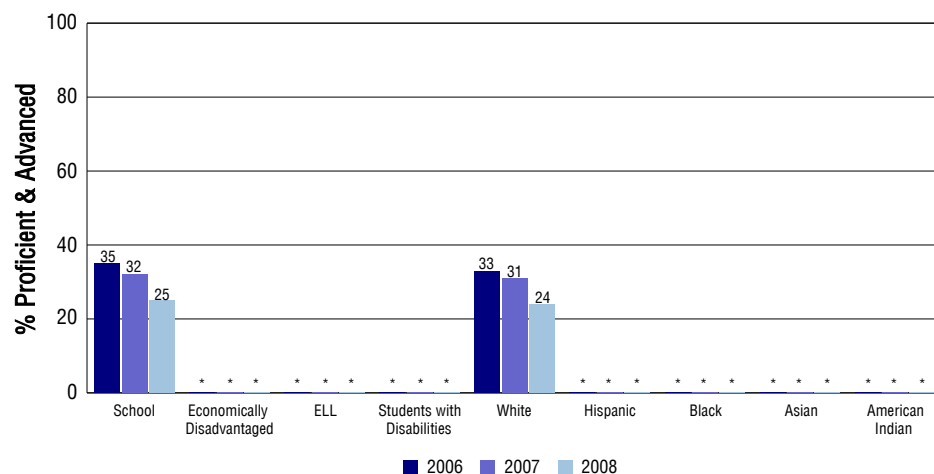
Reading



Writing



Math



SCHOOL INFORMATION

School Pride (as submitted by your district)

- State-of-the-art technology is incorporated into classroom instruction.
- Our students participate in a variety of A P courses and extracurricular opportunities including Matchwits, music, sports teams, student council and others.
- Homework/help sessions are available to students to provide individualized assistance with homework or other academic needs both during school hours and after.
- Our parent community is an integral component of our school community.

School Goals (as submitted by your district)

Emphasize student achievement. Assure that all students of Kiowa Schools are being taught on an individual basis at an appropriate level and that all students meet or exceed state standards.

No Child Left Behind - Adequate Yearly Progress

Did your school make AYP in reading?	Yes	Math?	Yes
Did your school make the graduation rate targets?	Yes		
How many targets does your school have?	10	Met?	10

Based on this school's academic performance, your child may be eligible for one or more of the following; ask your school if your child qualifies for:

Extra academic instruction either before or after-school, or in the summer
Mentoring

For additional information regarding Adequate Yearly Progress please visit
<http://www.cde.state.co.us/FedPrograms/ayp/index.asp>

How Kiowa High School Compares To High Schools Within A 75-Mile Radius

School	Program Type	Academic Performance	Academic Growth
Frontier High School(1)	Alternative	Average	No Rating
Legacy Academy(1)	Charter	High	Typical
Elizabeth High School(1)		High	Typical
Elbert Junior-Senior High School(2)		High	Typical
Ponderosa High School(3)		High	Typical
Cherokee Trail High School(4)		High	Typical
Daniel C Oakes High School--Castle Rock(3)	Alternative	Average	No Rating
Douglas County High School(3)		High	Typical
Peyton High School(5)		High	High
Chaparral High School(3)		High	Low

- 1 Located in Elizabeth C-1 School District.
2 Located in Elbert 200 School District.
3 Located in Douglas County RE 1 School District.
4 Located in Cherry Creek 5 School District.
5 Located in Peyton 23 Jt School District.

ABOUT OUR STAFF

School Employment

Each year, your district reports to the Colorado Department of Education on the number of adults who work in your school, as well as the type of work they do. Last year, your school employed:

	Your School		District	
	Full Time	Part Time	Full Time	Part Time
Teachers	9	6	32	3
Paraprofessionals	1	0	6	1
Administrators	1	0	3	0
Other Professionals	0	1	0	2
School Support	6	0	10	0
School Counselors	0	1	1	0
School Librarians	1	0	1	0
Total Staff	25		57	

Students per Teacher Ratio

	Student Enrollment	Students per Teacher
Grade 9	21	8.3
Grade 10	29	11.5
Grade 11	30	9.7
Grade 12	31	10

Professional Experience of Teachers

	Your School	District
Average years of teaching experience	8	9
Percent of teachers teaching in the subject in which they received their degree	80%	80%
Number of teachers with Masters or Doctoral degrees	4	4
Teachers with 3 years or more of teaching experience	7	20
Teachers with less than 3 years of teaching experience	8	15
Number of professional development days	8	8

Salaries

	Your School	District	State
Average Teacher Salary	\$32,944	\$33,976	\$47,494
Average Administrator Salary	\$57,100	\$63,567	\$80,444

Principal: Lance Luitjens

Number of years as Principal at this school: 1 (New Hire 2007/2008)

Number of years as Principal at any school: 2