

SAFETY AND SCHOOL ENVIRONMENT

Non-CSAP Course Offerings

Your School Offers	does	does not
• art.....	<input checked="" type="checkbox"/>	<input type="checkbox"/>
• drama or theater.....	<input type="checkbox"/>	<input checked="" type="checkbox"/>
• music.....	<input checked="" type="checkbox"/>	<input type="checkbox"/>
• physical education.....	<input checked="" type="checkbox"/>	<input type="checkbox"/>
• opportunity for civic or community engagement.....	<input checked="" type="checkbox"/>	<input type="checkbox"/>
• internet safety program.....	<input checked="" type="checkbox"/>	<input type="checkbox"/>
• International Baccalaureate.....	<input type="checkbox"/>	<input checked="" type="checkbox"/>
• extracurricular activities.....	<input checked="" type="checkbox"/>	<input type="checkbox"/>
• athletics.....	<input checked="" type="checkbox"/>	<input type="checkbox"/>
• career and technical education.....	<input checked="" type="checkbox"/>	<input type="checkbox"/>
• honors.....	<input checked="" type="checkbox"/>	<input type="checkbox"/>

Safety and Discipline

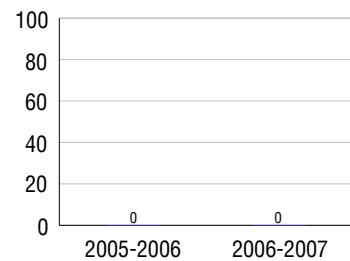
Safe schools are a top priority for parents, teachers, and communities. Your school safety and discipline record for the 2007-2008 school year is:

Type of Incident	Number of Incidents Reported	Percent of Total Incidents
Substance Abuse - Drugs		
Substance Abuse - Alcohol		
Substance Abuse - Tobacco		
Felony Assaults		
Fights	6	46.2%
Possession of Dangerous Weapons		
Other Violations Code of Conduct	7	53.8%

Student Attendance and School Calendar

2007-2008	Your School
Enrollment	93
Average Daily Attendance	87
Student Dropouts	0.0%

Dropout Rate



Student Information Over Time

	2005-2006	2006-2007	2007-2008
Student Enrollment Stability	96.6%	100.0%	100.0%
Students Eligible for Free and Reduced Lunch	33.7 %	21.7 %	21.5 %

For more information and further details about this report, visit www.state.co.us/schools
Colorado Department of Education, 201 East Colfax Ave. Denver, CO 80203

Kiowa Middle School
0930/4726/M

525 Comanche Street . Kiowa, CO 80117 . 303-621-2785
10/20/2008

DISTRICT TAXPAYER'S REPORT

Sources of School District Revenue	2007	District Source of Funds 2007	
Local Tax Contribution	\$943,779		
State Tax Contribution	2,356,920		
Federal Grants	91,198		
State Grants	774,523		
Private/Partnership Grants	0		
Other Discretionary Income	389,358		
Total District Operating Revenue	\$4,555,778		
Long Term Debt Proceeds	253,416		
Total District Revenue	\$4,809,194		
Total District Operating Revenue Per Pupil =	\$12,797		
Total District Revenue Per Pupil (Including Long Term Debt) =	\$13,509		
District Per Pupil Operating Revenue =	\$7,713	District Debt and Capital Construction & Equipment	
State Average Per Pupil Operating Revenue =	\$6,080		
District Use of Funds	2007		
Instructional & Instructional Support	\$2,244,792	Total Outstanding Bonded Debt	\$1,375,000
Administration	383,605	Average Annual Percentage Interest Rate on Debt	3.75%
Building & Facilities Maintenance	396,099	Amount Raised from Most Recent Bond	\$2,300,000
Operational Expenditures	245,112	Amount Spent on New Buildings During Last 2 Years	\$79,871
Debt Service	220,258		
Other Expenditures	114,753		
Total District Operating Expenditures	\$3,604,619		
Capital Expenditures	1,127,490		
Total District Use of Funds	\$4,732,109		

Accreditation

Accreditation is Colorado's primary accountability system, incorporating achievement levels, academic growth, achievement gaps, post-secondary readiness, improvement planning, and compliance. The state accredits districts and districts accredit individual schools.

District Accreditation Status for the 2007-2008 school year:

Voter Approved Funding Changes

Your community did /did not hold an election in November 2006

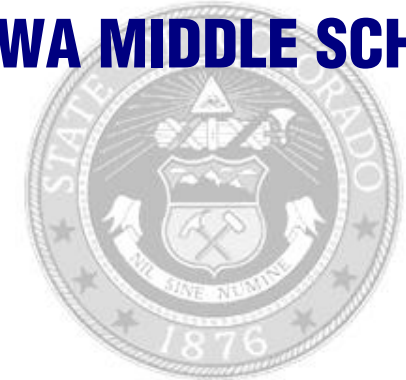
The following items have been approved by voters:

TABOR Override

Bond

Mill Levy Increase

KIOWA MIDDLE SCHOOL



KIOWA C-2

www.kiowaschool.org

School Accountability Report 2007-2008 School Year

School Performance Summary

Overall Academic Performance on State Assessments **High**

Academic Growth of Students **Typical**

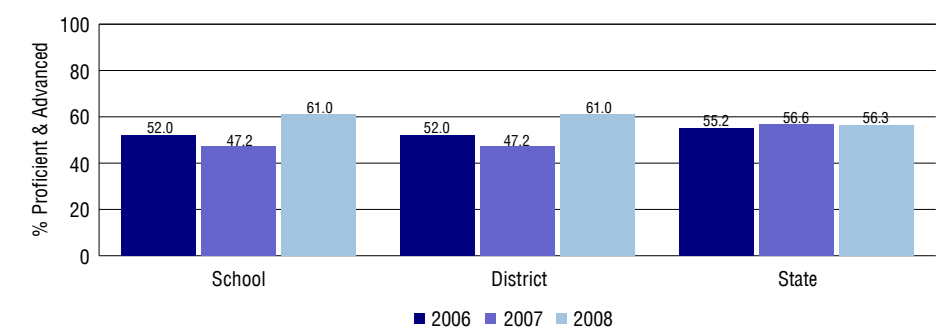
Overall Academic Performance on State Assessments

Each school in the State received a rating of "Excellent", "High", "Average", "Low", or "Unsatisfactory" for student academic performance based on 2007-2008 CSAP and COACT results. The rating is calculated using weighted percentages of each CSAP proficiency level for all content area and grade results for the school, as well as average COACT Reading, Writing, and Math Grade 11 results.

Academic Growth of Students

Each school in the State received a rating of "Low", "Typical", or "High" for student academic growth based on CSAP results. The calculation method is new for 2007-2008. The rating is calculated using student percentile scores matched over two years. More information about the Overall Academic Performance rating and Academic Growth of Students calculations can be found here: http://www.cde.state.co.us/cdeassess/SAR_Info.html.

Percent Proficient and Advanced for Middle Grades for All Content Areas



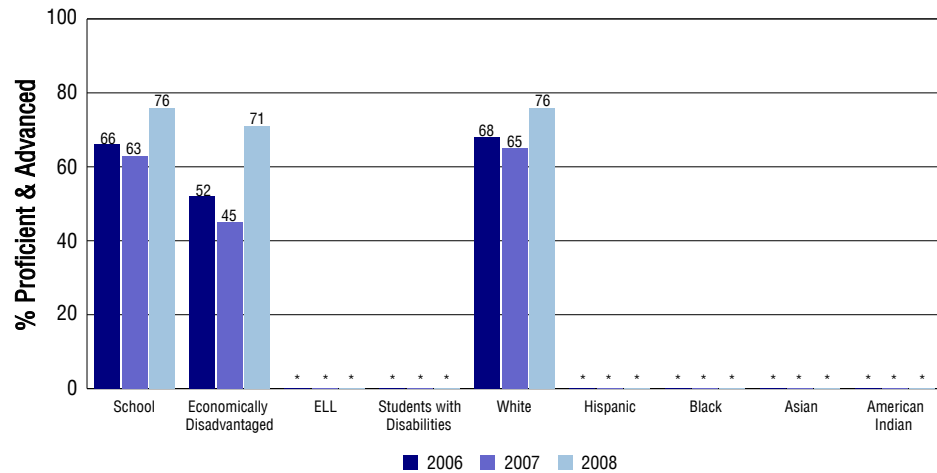
Student Test Scores Used For Calculating Overall Academic Performance

92.3%	Test Scores Counted
1.1%	Test Scores not used due to Language
6.6%	Test Scores not used due to New Student

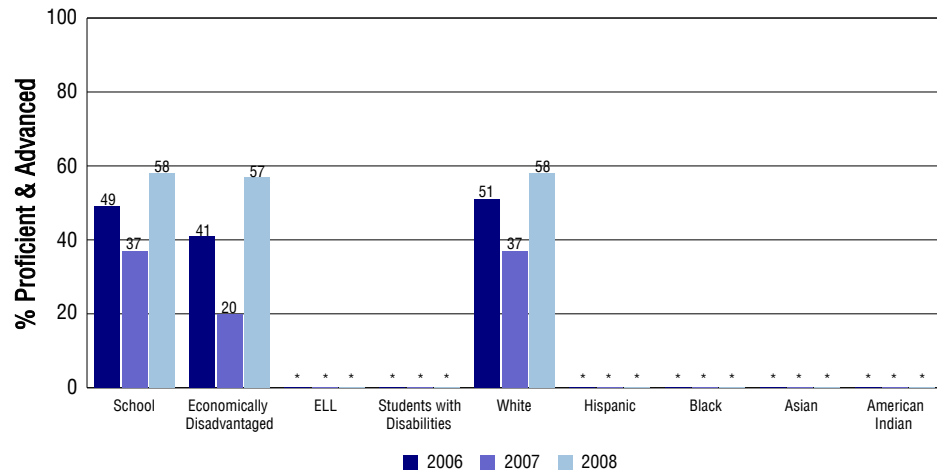
STUDENT PERFORMANCE

These graphs show the percent Proficient and Advanced trends over the past three years for Reading, Writing, and Math. Results are presented for the entire school for all reported grades as well as for different subgroups. Note: * indicates any group with less than 16 student results to be reported.

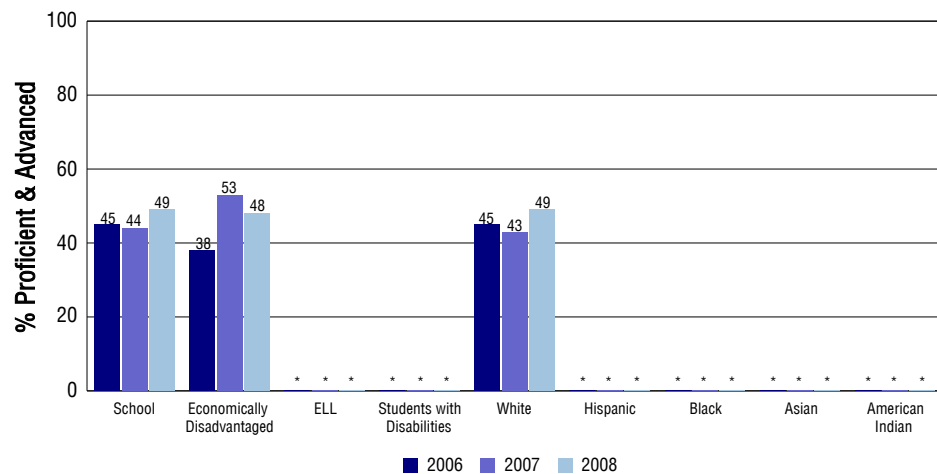
Reading



Writing



Math



SCHOOL INFORMATION

School Pride (as submitted by your district)

- State-of-the-art technology is incorporated into classroom instruction.
- Our students participate in a variety of extracurricular opportunities including Matchwits, choir, band, sports teams, student council and others.
- Homework/help sessions are available to students to provide individualized assistance with homework or other academic needs both during school hours and after.
- Our parent community is an integral component of our school community.

School Goals (as submitted by your district)

Emphasize student achievement. Assure that all students of Kiowa Schools are being taught on an individual basis at an appropriate level and that all students meet or exceed state standards.

No Child Left Behind - Adequate Yearly Progress

Did your school make AYP in reading? Yes Math? Yes
 How many targets does your school have? 12 Met? 12

Based on this school's academic performance, your child may be eligible for one or more of the following; ask your school if your child qualifies for:

Extra academic instruction either before or after-school, or in the summer
 Mentoring

For additional information regarding Adequate Yearly Progress please visit
<http://www.cde.state.co.us/FedPrograms/ayp/index.asp>

How Kiowa Middle School Compares To Middle Schools Within A 75-Mile Radius

School	Program Type	Academic Performance	Academic Growth
Legacy Academy(1)	Charter	High	Typical
Elizabeth Middle School(1)		High	Typical
Elbert Junior-Senior High School(2)		High	Typical
Sagewood Middle School(3)		High	Typical
Sierra Middle School(3)		High	Low
Core Knowledge Charter School(3)	Charter	Excellent	Typical
Liberty Middle School(4)		High	Typical
Peyton Middle School(5)		High	High
Castle Rock Middle School(3)		High	Low
Challenge To Excellence Charter School(3)	Charter	High	Typical

- 1 Located in Elizabeth C-1 School District.
- 2 Located in Elbert 200 School District.
- 3 Located in Douglas County RE 1 School District.
- 4 Located in Cherry Creek 5 School District.
- 5 Located in Peyton 23 Jt School District.

ABOUT OUR STAFF

School Employment

Each year, your district reports to the Colorado Department of Education on the number of adults who work in your school, as well as the type of work they do. Last year, your school employed:

	Your School		District	
	Full Time	Part Time	Full Time	Part Time
Teachers	5	7	32	3
Paraprofessionals	1	2	6	1
Administrators	0	0	3	0
Other Professionals	0	0	0	2
School Support	1	0	10	0
School Counselors	0	1	1	0
School Librarians	0	0	1	0
Total Staff	17		57	

Students per Teacher Ratio

	Student Enrollment	Students per Teacher
Grade 6	30	12.6
Grade 7	35	15.4
Grade 8	28	12.3

Professional Experience of Teachers

	Your School	District
Average years of teaching experience	6	9
Percent of teachers teaching in the subject in which they received their degree	82%	80%
Number of teachers with Masters or Doctoral degrees	2	4
Teachers with 3 years or more of teaching experience	6	20
Teachers with less than 3 years of teaching experience	6	15
Number of professional development days	8	8

Salaries

	Your School	District	State
Average Teacher Salary	\$32,017	\$33,976	\$47,494
Average Administrator Salary	\$0	\$63,567	\$80,444

Principal: N/R

Number of years as Principal at this school: N/R

Number of years as Principal at any school: N/R