

# SAFETY AND SCHOOL ENVIRONMENT

## Non-CSAP Course Offerings

Your School Offers	does	does not
• art.....	<input checked="" type="checkbox"/>	<input type="checkbox"/>
• drama or theater.....	<input type="checkbox"/>	<input checked="" type="checkbox"/>
• music.....	<input checked="" type="checkbox"/>	<input type="checkbox"/>
• physical education.....	<input checked="" type="checkbox"/>	<input type="checkbox"/>
• opportunity for civic or community engagement.....	<input checked="" type="checkbox"/>	<input type="checkbox"/>
• internet safety program.....	<input checked="" type="checkbox"/>	<input type="checkbox"/>
• International Baccalaureate.....	<input type="checkbox"/>	<input checked="" type="checkbox"/>
• extracurricular activities.....	<input checked="" type="checkbox"/>	<input type="checkbox"/>
• athletics.....	<input type="checkbox"/>	<input checked="" type="checkbox"/>
• preschool program.....	<input checked="" type="checkbox"/>	<input type="checkbox"/>
• full-day kindergarten program.....	<input type="checkbox"/>	<input checked="" type="checkbox"/>
• before-and-after-school care program.....	<input checked="" type="checkbox"/>	<input type="checkbox"/>

## Safety and Discipline

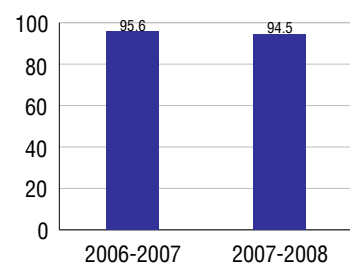
Safe schools are a top priority for parents, teachers, and communities. Your school safety and discipline record for the 2007-2008 school year is:

Type of Incident	Number of Incidents Reported	Percent of Total Incidents
Substance Abuse - Drugs		
Substance Abuse - Alcohol		
Substance Abuse - Tobacco		
Felony Assaults		
Fights		
Possession of Dangerous Weapons		
Other Violations Code of Conduct	1	100.0%

## Student Attendance and School Calendar

2007-2008	Your School
Enrollment	164
Average Daily Attendance	155
Student Dropouts	N/A

## Attendance Rate



## Student Information Over Time

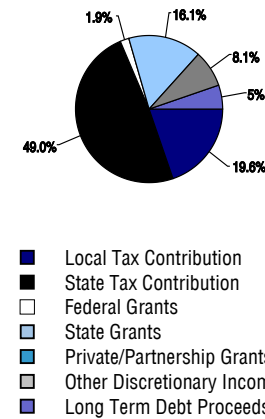
	2005-2006	2006-2007	2007-2008
Student Enrollment Stability	79.6%	85.9%	85.4%
Students Eligible for Free and Reduced Lunch	21.5 %	20.6 %	17.1 %

For more information and further details about this report, visit [www.state.co.us/schools](http://www.state.co.us/schools)  
 Colorado Department of Education, 201 East Colfax Ave. Denver, CO 80203  
**Kiowa Elementary School**  
 0930/4724/E  
 525 Comanche Street . Kiowa, CO 80117 . 303-621-2042  
 10/20/2008

# DISTRICT TAXPAYER'S REPORT

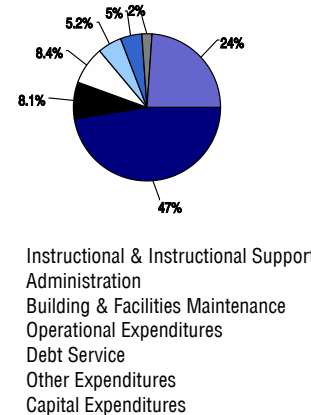
Sources of School District Revenue	2007
Local Tax Contribution	\$943,779
State Tax Contribution	2,356,920
Federal Grants	91,198
State Grants	774,523
Private/Partnership Grants	0
Other Discretionary Income	389,358
<b>Total District Operating Revenue</b>	<b>\$4,555,778</b>
Long Term Debt Proceeds	253,416
<b>Total District Revenue</b>	<b>\$4,809,194</b>
<b>Total District Operating Revenue Per Pupil =</b>	<b>\$12,797</b>
<b>Total District Revenue Per Pupil (Including Long Term Debt) =</b>	<b>\$13,509</b>
<b>District Per Pupil Operating Revenue =</b>	<b>\$7,713</b>
<b>State Average Per Pupil Operating Revenue =</b>	<b>\$6,080</b>

## District Source of Funds 2007



District Use of Funds	2007
Instructional & Instructional Support	\$2,244,792
Administration	383,605
Building & Facilities Maintenance	396,099
Operational Expenditures	245,112
Debt Service	220,258
Other Expenditures	114,753
<b>Total District Operating Expenditures</b>	<b>\$3,604,619</b>
Capital Expenditures	1,127,490
<b>Total District Use of Funds</b>	<b>\$4,732,109</b>

## District Use of Funds 2007



## District Debt and Capital Construction & Equipment

Total Outstanding Bonded Debt	\$1,375,000
Average Annual Percentage Interest Rate on Debt	3.75%
Amount Raised from Most Recent Bond	\$2,300,000
Amount Spent on New Buildings During Last 2 Years	\$79,871

## Accreditation

Accreditation is Colorado's primary accountability system, incorporating achievement levels, academic growth, achievement gaps, post-secondary readiness, improvement planning, and compliance. The state accredits districts and districts accredit individual schools.

District Accreditation Status for the 2007-2008 school year:

## Voter Approved Funding Changes

Your community did  /did not  hold an election in November 2006

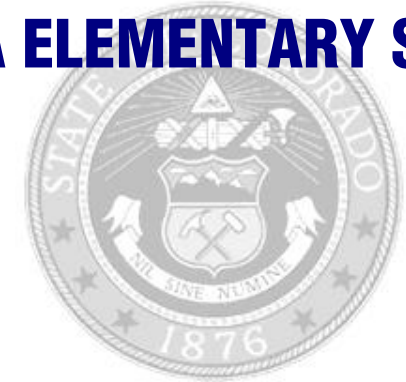
The following items have been approved by voters:

TABOR Override

Bond

Mill Levy Increase

# KIOWA ELEMENTARY SCHOOL



## KIOWA C-2

[www.kiowaschool.org](http://www.kiowaschool.org)  
**School Accountability Report**  
**2007-2008 School Year**

## School Performance Summary

**Overall Academic Performance on State Assessments** **Average**

**Academic Growth of Students** **Typical**

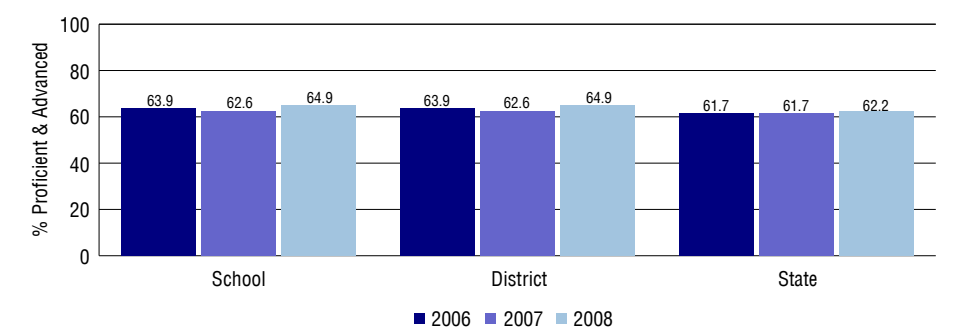
### Overall Academic Performance on State Assessments

Each school in the State received a rating of "Excellent", "High", "Average", "Low", or "Unsatisfactory" for student academic performance based on 2007-2008 CSAP and COACT results. The rating is calculated using weighted percentages of each CSAP proficiency level for all content area and grade results for the school, as well as average COACT Reading, Writing, and Math Grade 11 results.

### Academic Growth of Students

Each school in the State received a rating of "Low", "Typical", or "High" for student academic growth based on CSAP results. The calculation method is new for 2007-2008. The rating is calculated using student percentile scores matched over two years. More information about the Overall Academic Performance rating and Academic Growth of Students calculations can be found here: [http://www.cde.state.co.us/cdeassess/SAR\\_Info.html](http://www.cde.state.co.us/cdeassess/SAR_Info.html).

## Percent Proficient and Advanced for Elementary Grades for All Content Areas



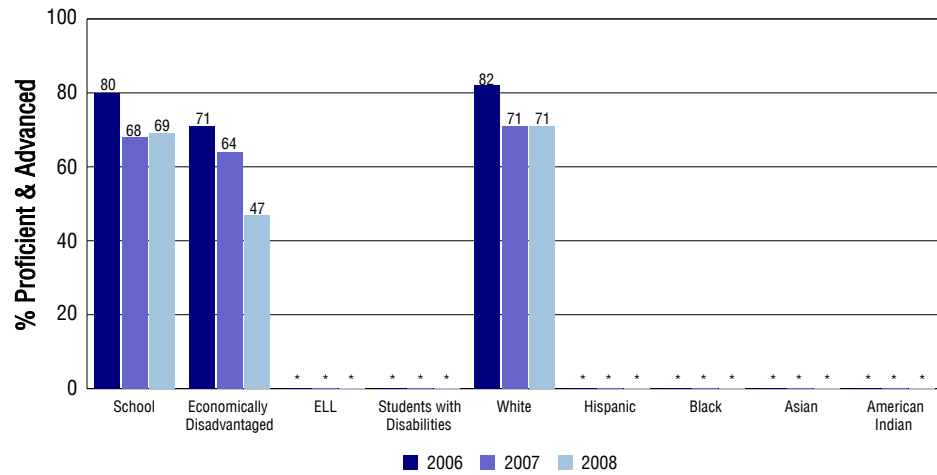
## Student Test Scores Used For Calculating Overall Academic Performance

93.5%	Test Scores Counted
0.0%	Test Scores not used due to Language
6.5%	Test Scores not used due to New Student

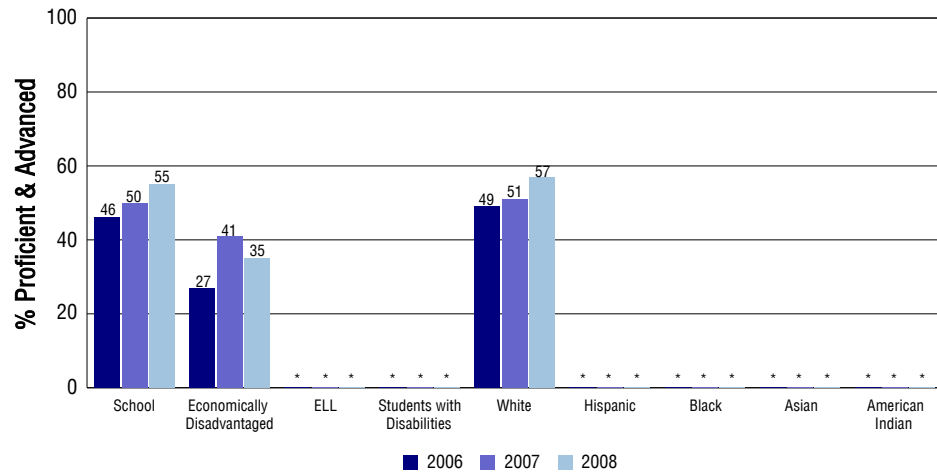
## STUDENT PERFORMANCE

These graphs show the percent Proficient and Advanced trends over the past three years for Reading, Writing, and Math. Results are presented for the entire school for all reported grades as well as for different subgroups. Note: \* indicates any group with less than 16 student results to be reported.

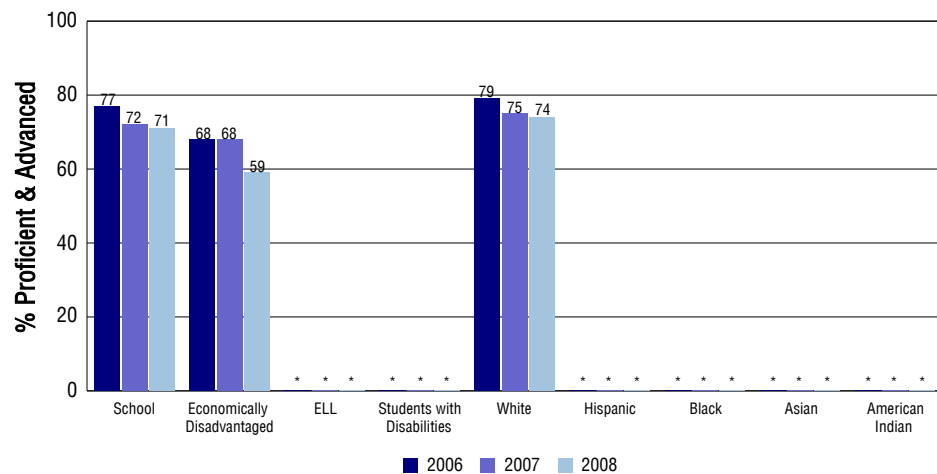
### Reading



### Writing



### Math



## SCHOOL INFORMATION

### School Pride (as submitted by your district)

- Special program to acknowledge "Terrific Kids" each month
- Our students participate in a variety of extracurricular opportunities including Matchwits, choir, band, student council and others.
- Homework/help sessions are available to students to provide individualized assistance with homework or other academic needs both during school hours and after.
- Our parent community is an integral component of our school community.

### School Goals (as submitted by your district)

Emphasize student achievement. Assure that all students of Kiowa Schools are being taught on an individual basis at an appropriate level and that all students meet or exceed state standards.

### No Child Left Behind - Adequate Yearly Progress

Did your school make AYP in reading?	Yes	Math?	Yes
How many targets does your school have?	12	Met?	12

Based on this school's academic performance, your child may be eligible for one or more of the following; ask your school if your child qualifies for:

Extra academic instruction either before or after-school, or in the summer  
Mentoring

For additional information regarding Adequate Yearly Progress please visit  
<http://www.cde.state.co.us/FedPrograms/ayp/index.asp>

### How Kiowa Elementary School Compares To Elementary Schools Within A 75-Mile Radius

School	Program Type	Academic Performance	Academic Growth
Running Creek Elementary School(1)		High	Typical
Legacy Academy(1)	Charter	Average	Typical
Elbert Elementary School(2)		High	Low
Singing Hills Elementary School(1)		Average	Typical
Franktown Elementary School(3)		High	Typical
Cherry Valley Elementary School(3)		Average	High
Mountain View Elementary School(3)		High	No Rating
Flagstone Elementary School(3)		High	High
Frontier Valley Elementary School(3)		High	Typical
Northeast Elementary School(3)		High	Typical

1 Located in Elizabeth C-1 School District.  
2 Located in Elbert 200 School District.  
3 Located in Douglas County RE 1 School District.

## ABOUT OUR STAFF

### School Employment

Each year, your district reports to the Colorado Department of Education on the number of adults who work in your school, as well as the type of work they do. Last year, your school employed:

	Your School		District	
	Full Time	Part Time	Full Time	Part Time
Teachers	12	6	32	3
Paraprofessionals	3	1	6	1
Administrators	1	0	3	0
Other Professionals	0	1	0	2
School Support	2	0	10	0
School Counselors	0	1	1	0
School Librarians	0	0	1	0
<b>Total Staff</b>	26		57	

### Students per Teacher Ratio

	Student Enrollment	Students per Teacher
Grade 1	22	8.1
Grade 2	24	8.8
Grade 3	30	11.1
Grade 4	25	9.2
Grade 5	21	9.5

### Professional Experience of Teachers

	Your School	District
Average years of teaching experience	10	9
Percent of teachers teaching in the subject in which they received their degree	N/A	N/A
Number of teachers with Masters or Doctoral degrees	2	4
Teachers with 3 years or more of teaching experience	11	20
Teachers with less than 3 years of teaching experience	7	15
Number of professional development days	9	8

### Salaries

	Your School	District	State
Average Teacher Salary	\$35,636	\$33,976	\$47,494
Average Administrator Salary	\$52,000	\$63,567	\$80,444

Principal: Brenda Wham

Number of years as Principal at this school: 1 (New Hire 2007/2008)

Number of years as Principal at any school: 2